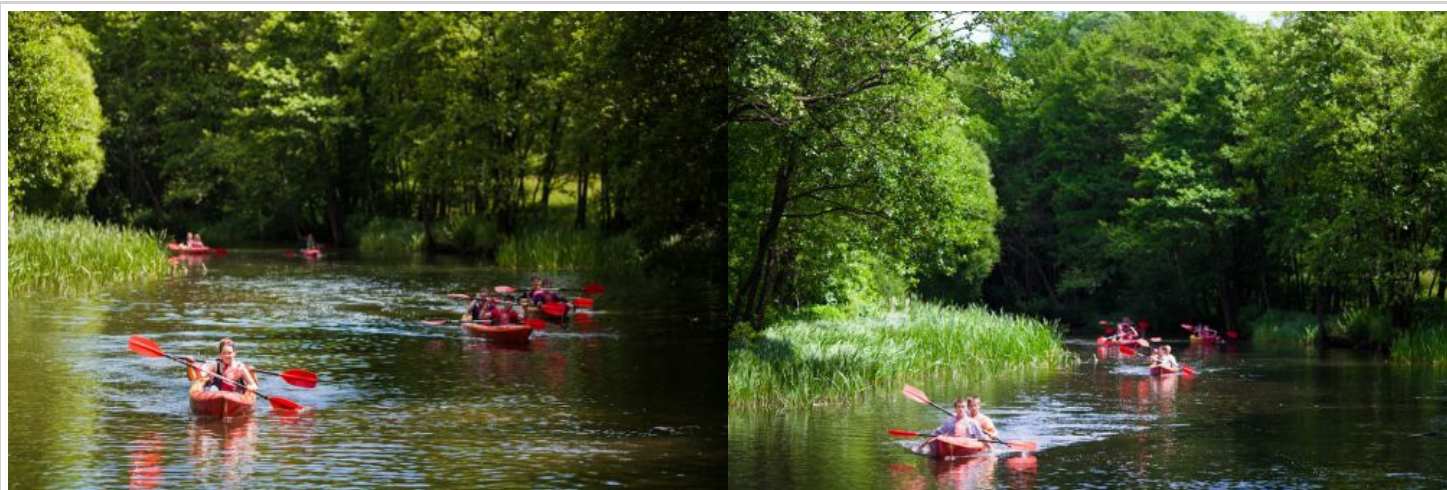


www.ekajaki.pl  
ul. Strażacka 21  
77-124 Parchowo  
woj. Pomorskie

tel. + 48 510 808 333 - wynajem, rezerwacje, spływy  
Gadu Gadu: 791845  
Skype: ekajaki  
e-mail: info@ekajaki.pl

## My first time in kayak

Trudność szlaku:	easy
Rzeka:	Słupia
Start:	Parchowo
Zakończenie:	Bylina
Długość:	6 km
Czas spływu:	3h
Ilość przenosek stałych:	none
Preferowany sprzęt:	single, double, canoe
Minimalna liczba uczestników:	6 person



## Description

You have never canoed on the river before? You are unsure whether your child will stand the entire kayaking trip? You do not know whether or not your wife, girlfriend, husband, boyfriend, mother-in-law - like this form of active recreation in nature? This is the route for you. The river runs slowly, there are no obstacles in the river, beautiful Lake Żukowskie and all that within a little over two hours of kayaking.

After this trip you will be able to assess whether this is your cup of tea. First encounter with the river behind your belt! Now it's time to look for something longer and a little more difficult or you can just sit and continue watching TV;-)